



# ZeoSand FAQs

## Frequently Asked Questions

Review our FAQs below, or for additional product information see [Printable Files](#).

### What is ZeoSand® ?

ZeoSand is a 100% natural zeolite replacement for a sand filter that gives DE-like clarity and controls chloramine formation.

### How much ZeoSand is used in a sand filter?

Fill the sand filter with ZeoSand to the level recommended by the filter manufacturer. For more information see the [ZeoSand Application Rates Chart](#).

### How do you fill a sand filter with ZeoSand?

#### Step 1

- Determine the amount of media required for your filter based on the ZeoSand replacement ratio.
- Empty filter and make any needed repairs.

#### Step 2

- Fill filter half-way with water.

#### Step 3

- Slowly pour ZeoSand into filter allowing all media granules to be thoroughly wetted.
- Make sure no media enters lateral piping assembly.

#### Step 4

- Close filter and backwash until backwash water is clear.
- Allow ZeoSand to settle for 5 minutes.
- Backwash for an additional 2 minutes.
- Turn filter on.

### How long does ZeoSand last?

ZeoSand lasts approximately as long as sand.

### How is less ZeoSand used when the filter is filled to the same level as sand?

Although the sand filter is filled with ZeoSand to the same level as sand, you use less ZeoSand (by weight) than sand. This is because the bulk density of ZeoSand is less than that of sand. Bulk density includes the air space within the structure of the particles as well as the airspace between the particles. The zeolite's unique honeycomb-like structure creates air chambers making it less dense and giving it exceptional filtering capabilities.

Thus it takes less zeolite by weight to fill a filter, and twenty-five pounds of zeolite does the work of fifty pounds of sand.

### What is bulk density?

Bulk density is essentially the weight of specified quantity of material divided by the volume occupied by that material. Because sand grains are denser than zeolite grains, a unit volume of sand weighs more than the same volume of zeolite. That's why it takes less zeolite by weight to fill a filter.



### Why does ZeoSand give DE-like clarity?

A cubic foot of ZeoSand has about 100 times the surface area as a cubic foot of sand. The small dirt particles are trapped by the rough surface of ZeoSand. Sand is smooth and does not trap the small particles.

### How soon will ZeoSand improve the pool water clarity?

Within 24 hours the clarity improvement will be seen. After about four days the DE-like clarity will be achieved.

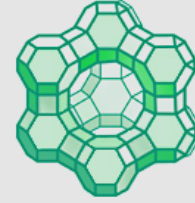
### How does ZeoSand control chloramines?

ZeoSand acts like a water softener to trap ammonium ions from the pool water. With less ammonia in the water, the eye-burning chloramines are reduced. Depending upon the number of swimmers, the ZeoSand will reduce chloramines for about two years.

### Can the chloramine control be renewed?

Yes. Like any water softening resin, the ZeoSand ammonium trapping can be renewed with a saltwater rinse. Drain the filter, fill with a 10% salt solution, and let stand for at least two hours. Then, backwash to waste. For additional details see [Refreshing](#).

### Zeolite Structure

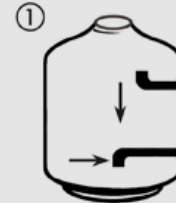


Zeolites's unique three-dimensional-honeycomb structure makes it an effective filter media.

[More on Zeolites](#) →

### Filling Sand Filters

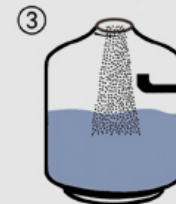
Follow these instructions to fill sand filters with ZeoSand. Other important details are listed in the [ZeoSand Application Rates chart](#) (at left).



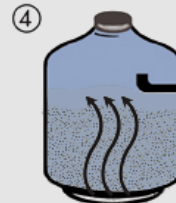
Empty filter and make any needed repairs.



Fill filter half-way with water.



Slowly pour ZeoSand into filter.



Close filter and backwash until backwash water is clear.